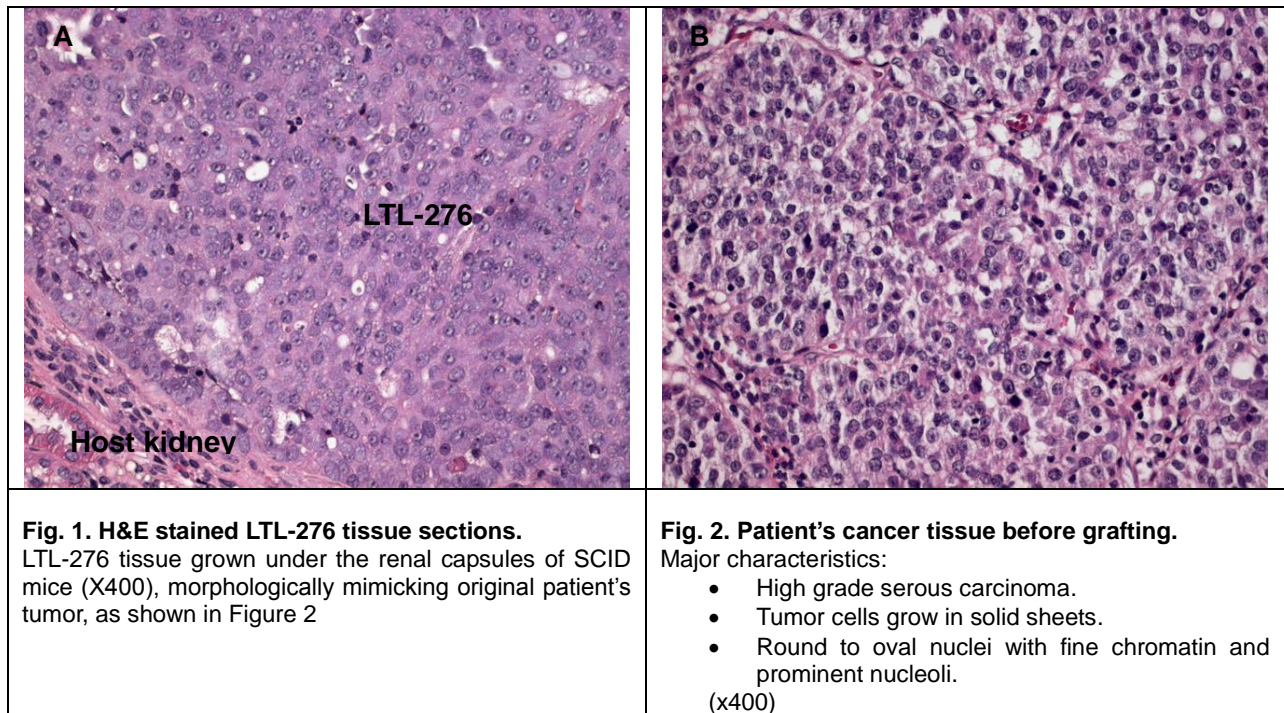


LTL-276 datasheet

Origin	Primary human ovarian cancer	Histopathology	High grade serous carcinoma
Year of establishment	2008	Doubling time	30 days (sub-renal capsule grafting site)
Local invasion	No	Metastasis	No

The LTL-276 (Fig. 1) was developed from a patient's primary ovarian cancer (high grade serous carcinoma). Histopathologically, it closely resembles the patient's tumor (Fig. 2). When grafted under the renal capsules of SCID mice, the LTL-276 shows no local invasion or metastasis.



Genetic and epigenetic characteristics

Tissue microarrays containing LTL-276 tissue are available for screening potential molecular targets.

Applications

1. Pre-clinical evaluation of existing and potential anticancer drugs. Examination of drug efficacy on tumor growth, cell death (apoptosis, necrosis), tissue invasion, and angiogenesis.
2. Discovery of potential therapeutic targets and/or biomarkers for drug sensitivity.
3. Study of mechanisms underlying tumor growth and progression.

References

1. Lee et al., Gynecologic Oncology 2005; 96: 48-73
2. Press et al., Gynecologic Oncology 2008; 110: 256-282

For more information, please contact us by email: LTL@bccrc.ca or phone: (604) 675 8013