

LTL-299 datasheet

Origin	Primary human ovarian cancer	Histopathology	High grade serous adenocarcinoma
Year of establishment	2010	Doubling time	20 days (sub-renal)
Local invasion	No	Metastasis	No

The LTL-299 (Figure 1) was developed from a patient's primary ovarian cancer (high grade serous adenocarcinoma). When grafted under the renal capsules of SCID mice, the LTL-299 shows no local invasion into adjacent host kidney parenchyma. No metastasis was observed. The LTL-299 also grows well when grafted subcutaneously.

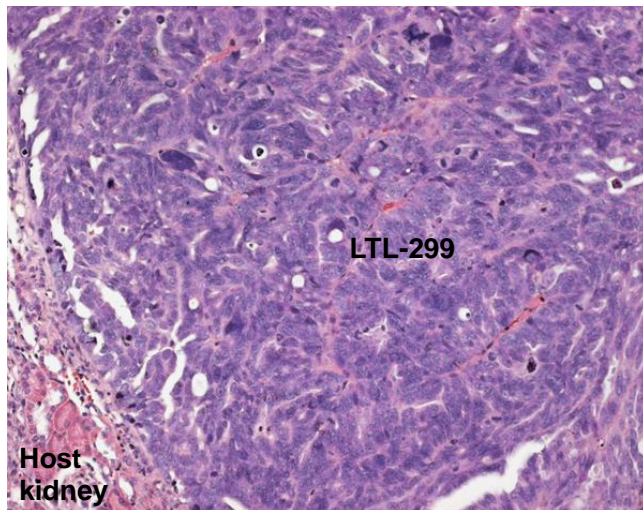


Fig. 1. H&E stained LTL-299 tissue sections.

A high grade serous adenocarcinoma grafted under the renal capsule of a NOD SCID mouse. The tumor cells grow in small nests, and locally form small glandular lumina (200x)

Applications

1. Pre-clinical evaluation of existing and potential anticancer drugs. Examination of drug efficacy on tumor growth, cell death (apoptosis, necrosis), and angiogenesis.
2. Discovery of potential therapeutic targets and/or biomarkers for drug sensitivity.
3. Study of mechanisms underlying tumor growth and progression.

References

1. Lee et al., Gynecologic Oncology 2005; 96: 48-57

2. Press et al., Gynecologic Oncology 2008; 110: 256-266

For more information, please contact us by email: LTL@bccrc.ca or phone: (604) 675 8013