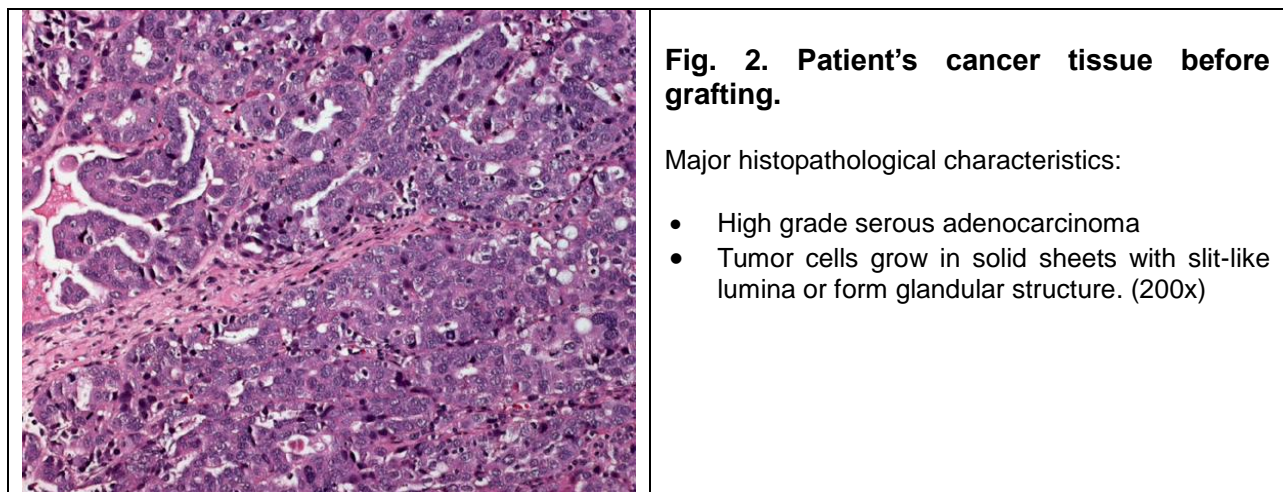
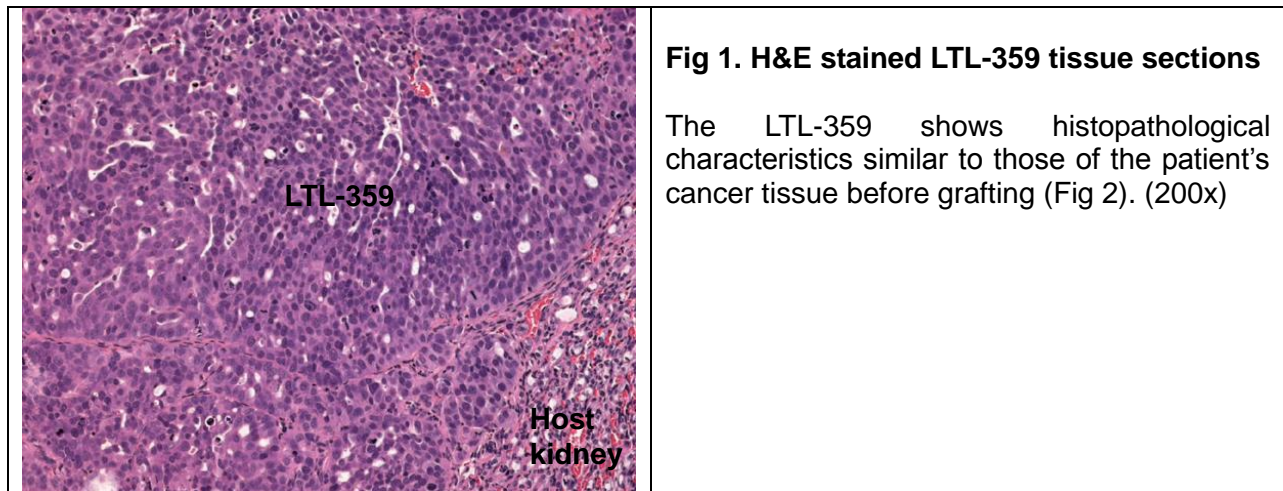


LTL-359 datasheet

Origin	Primary human ovarian cancer	Histopathology	Serous adenocarcinoma
Year of establishment	2011	Doubling time	10 days (subrenal capsule grafting site)
Local invasion	Yes	Metastasis	Yes

The LTL-359 was developed from a patient's primary ovarian cancer (high grade serous carcinoma). Histopathologically, it closely resembles the original patient's cancer (Figs. 1, 2). When grafted under the renal capsules of SCID mice, the LTL-359 shows limited local into adjacent host kidney parenchyma. Metastases are occasionally observed in host lung.



Genetic and epigenetic characteristics

Tumor line tissue (in Tissue Microarrays) for IHC and ISH is in place for screening potential targets upon request.

Applications

1. Pre-clinical evaluation of existing and potential anticancer drugs. Examination of drug efficacy on tumor growth, cell death (apoptosis, necrosis), tissue invasion, metastasis and angiogenesis.
2. Discovery of potential therapeutic targets and/or biomarkers for drug sensitivity.
3. Study of mechanisms underlying tumor growth, progression and metastasis.

For more information, please contact us by email: LTL@bccrc.ca or phone: (604) 675 8013