

LTL-366 datasheet

Origin	Primary human ovarian cancer	Histopathology	Endometrioid adenocarcinoma of ovary
Year of establishment	2010	Doubling time	12 days (sub-renal capsule grafting site)
Local invasion	Yes, limited	Metastasis	No

The LTL-366 (Figure 1) was developed from a patient's primary ovarian cancer (high-grade (grade 3) endometrioid adenocarcinoma). When grafted under the renal capsules of SCID mice, the LTL-366 shows limited local invasion into adjacent host kidney parenchyma. No distant metastasis was observed. The LTL-366 also grows well when grafted subcutaneously.

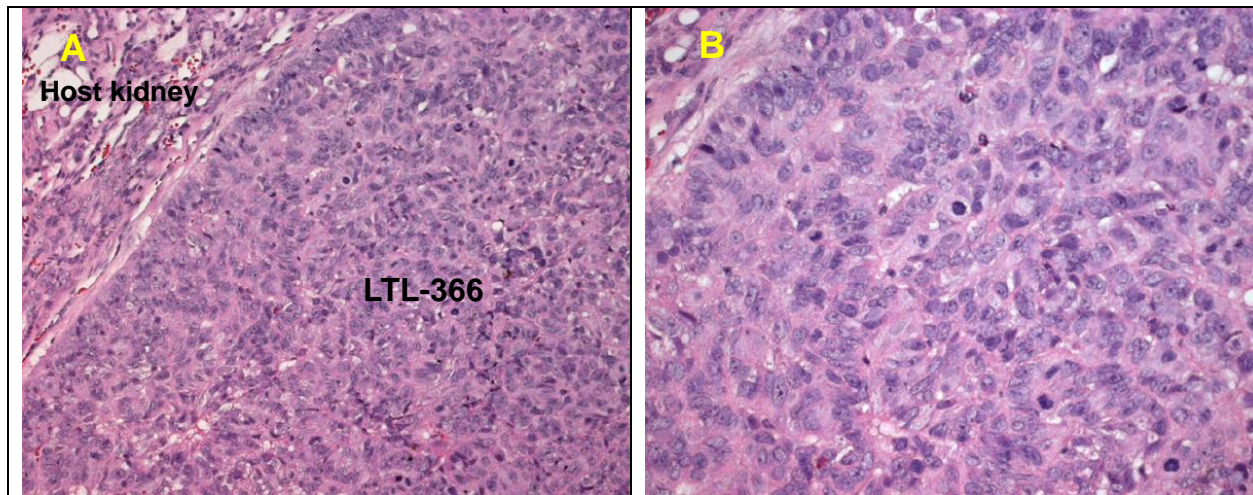


Fig 1. H&E stained LTL-366 tissue sections.

(A) Showing the tumor cells of LTL-366 grow in the pattern of solid sheets. x200 **(B)** Showing the high mitotic activity of tumor cells x400

Genetic and epigenetic characteristics

Tissue microarrays containing LTL-366 tissue are available for screening potential molecular targets.

Applications

1. Pre-clinical evaluation of existing and potential anticancer drugs. Examination of drug efficacy on tumor growth, cell death (apoptosis, necrosis), and angiogenesis.
2. Discovery of potential therapeutic and/or biomarkers for drug sensitivity targets.

3. Study of mechanisms underlying tumor growth and progression.

References

1. Lee et al., Gynecologic Oncology 2005; 96: 48-55
2. Press et al., Gynecologic Oncology 2008; 110: 256-264

For more information, please contact us by email: LTL@bccrc.ca or phone: (604) 675 8013