

LTL-375 datasheet

Origin	Primary human skin cancer	Histopathology	Melanoma
Year of establishment	2010	Doubling time	10 days (sub-renal capsule grafting site)
Local invasion	Yes	Metastasis	No

The LTL-375 (Figure 1) was developed from a patient's primary human melanoma. When grafted under the renal capsules of SCID mice, the LTL-375 shows local invasion into adjacent host kidney parenchyma. No metastasis was observed.

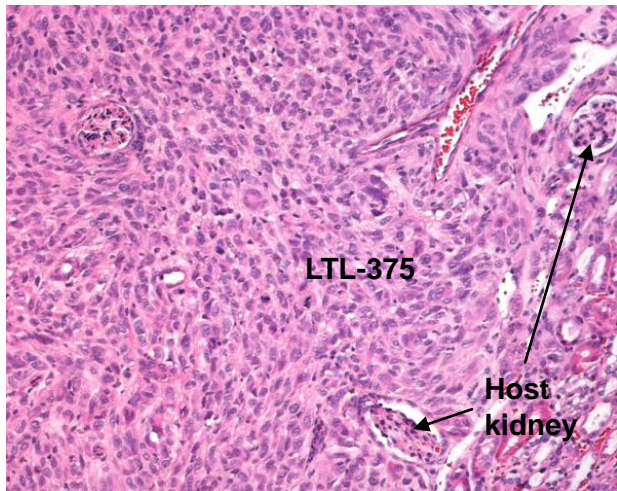


Fig. 1. H&E stained LTL-375 tissue sections.

Tumor cells of the LTL-375 invade into the parenchyma of host kidney. (x400)

Genetic and epigenetic characteristics

Tissue microarrays containing LTL-375 tissue are available for screening potential molecular targets.

Applications

1. Pre-clinical evaluation of existing and potential anticancer drugs. Examination of drug efficacy on tumor growth, cell death (apoptosis, necrosis), tissue invasion, and angiogenesis.
2. Discovery of potential therapeutic targets and/or biomarkers for drug sensitivity.

3. Study of mechanisms underlying tumor growth and progression.

For more information, please contact us by email: LTL@brrcr.ca or phone: (604) 675 8013