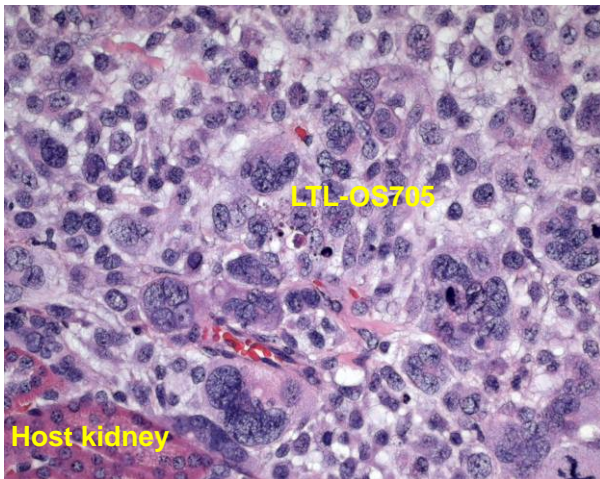


# LTL-OS705 datasheet

<b>Origin</b>	Human osteosarcoma	<b>Histopathology</b>	Osteosarcoma
<b>Year of establishment</b>	2008	<b>Doubling time</b>	5.2 days (sub-renal)
<b>Local invasion</b>	No	<b>Metastasis</b>	No
<b>Drug sensitivity</b>	Not determined		

The LTL-OS705 (Fig. 1) was developed from a patient's human osteosarcoma. When grafted under the renal capsules of SCID mice, the LTL-OS705 shows no local invasion into adjacent host kidney parenchyma. No metastasis was observed. The LTL-OS705 also grows well subcutaneously.



**Fig. 1. H&E stained LTL-OS705 tissue sections.**

The LTL-OS705 grown in a solid pattern with marked nuclear pleomorphism.

## Genetic and epigenetic characteristics

Tissue microarrays containing LTL-OS705 tissue are available for screening potential molecular targets.

## Applications

1. Pre-clinical evaluation of existing and potential anticancer drugs. Examination of drug efficacy on tumor growth, cell death (apoptosis, necrosis), tissue invasion, and angiogenesis.

2. Discovery of potential therapeutic targets and/or biomarkers for drug sensitivity.
3. Study of mechanisms underlying tumor growth and progression.

**For more information, please contact us by email: [LTL@bccrc.ca](mailto:LTL@bccrc.ca) or phone: (604) 675 8013**