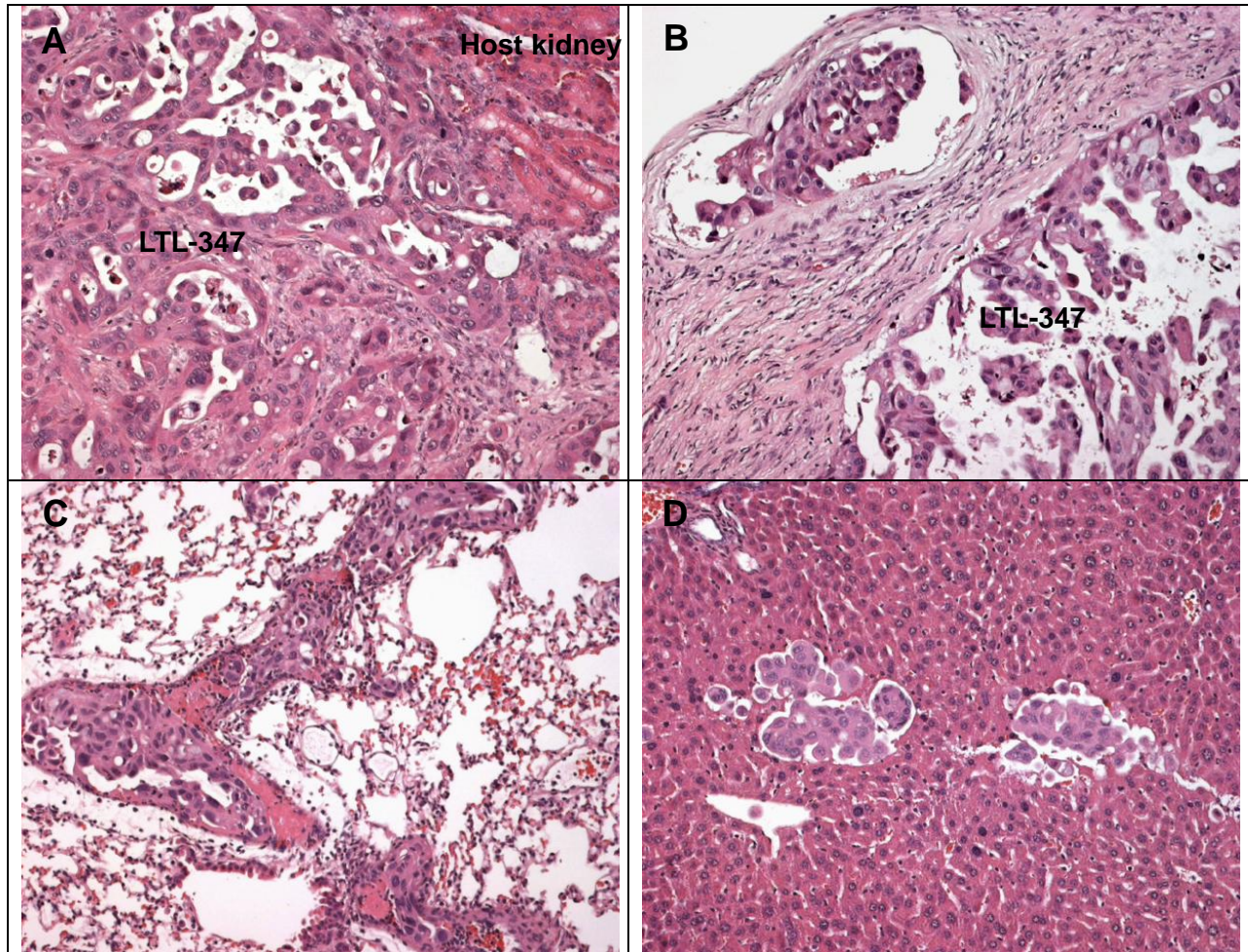


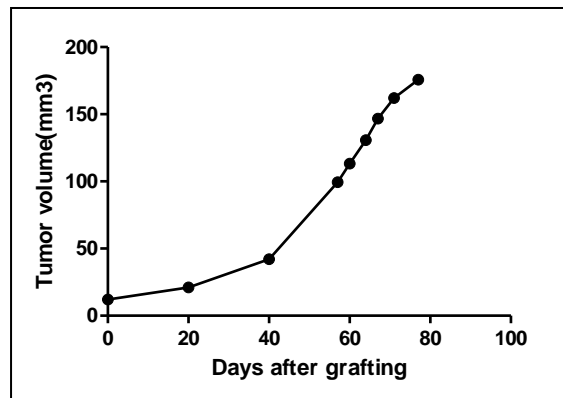
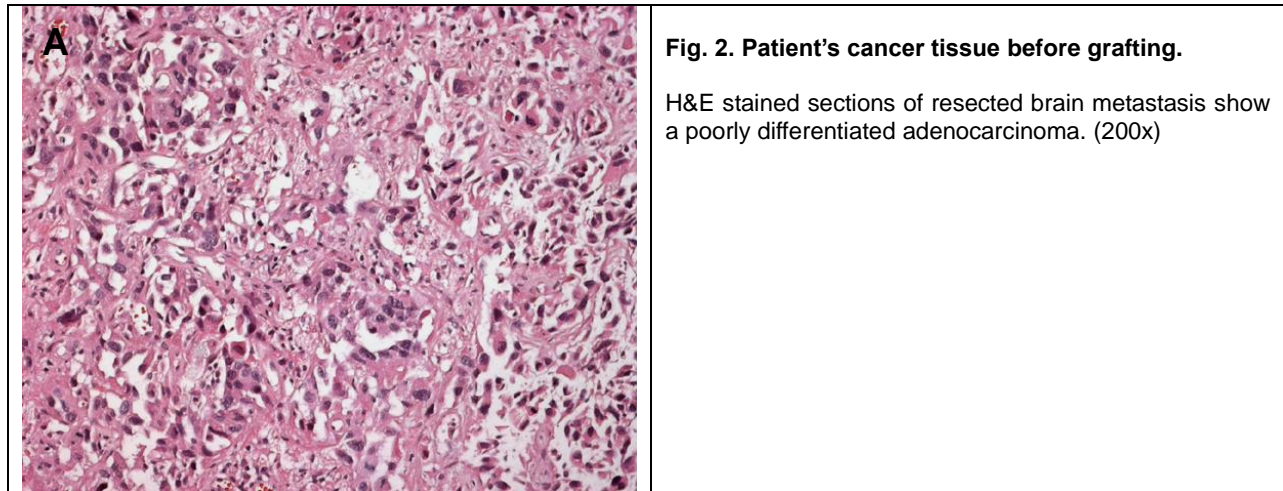
# LTL-347 datasheet

<b>Origin</b>	Human lung carcinoma	<b>Histopathology</b>	Metastatic adenocarcinoma of lung primary
<b>Year of establishment</b>	2010	<b>Doubling time</b>	19 days (subrenal capsule grafting site)
<b>Local invasion</b>	Yes	<b>Metastasis</b>	Yes

The LTL-347 (Fig. 1) was developed from a patient's metastatic lung carcinoma (brain metastasis of adenocarcinoma of lung primary, Fig. 2). When grafted under the renal capsules of SCID mice, the LTL-347 shows lymphatic/vascular invasion. Distant metastases have been frequently observed in host lungs and livers.



**Fig. 1. (A).** H&E stained LTL-347 tissue section showing a moderately to poorly differentiated adenocarcinoma. **(B).** The tumor cells invaded into lymphatic or blood vessels. **(C).** Lung metastasis. **(D)** Liver metastasis. (200x)



**Fig. 3. Growth curve of LTL-347 when grafted subcutaneously**

### **Applications**

1. Pre-clinical evaluation of existing and potential anticancer drugs. Examination of drug efficacy on tumor growth, cell death (apoptosis, necrosis), tissue invasion, metastasis and angiogenesis.
2. Discovery of potential therapeutic targets and/or biomarkers for drug sensitivity.
3. Study of mechanisms underlying tumor growth, progression and metastasis.

For more information, please contact us by email: [LTL@bccrc.ca](mailto:LTL@bccrc.ca) or phone: (604) 675 8013