

LTL-502 datasheet

Origin	Human leiomyosarcoma	Histopathology	Leiomyosarcoma of uterus
Year of establishment	2012	Doubling time	7 days (subrenal capsule graft site)
Local invasion	Yes, limited	Metastasis	No

The LTL-502 (Fig. 1) was developed from a patient's leiomyosarcoma of the uterus. The LTL-502 grows well subcutaneously or at subrenal capsule graft site. When grafted at the subrenal capsule graft site, the LTL-502 shows limited local invasion into host kidney. No metastasis is observed in host.

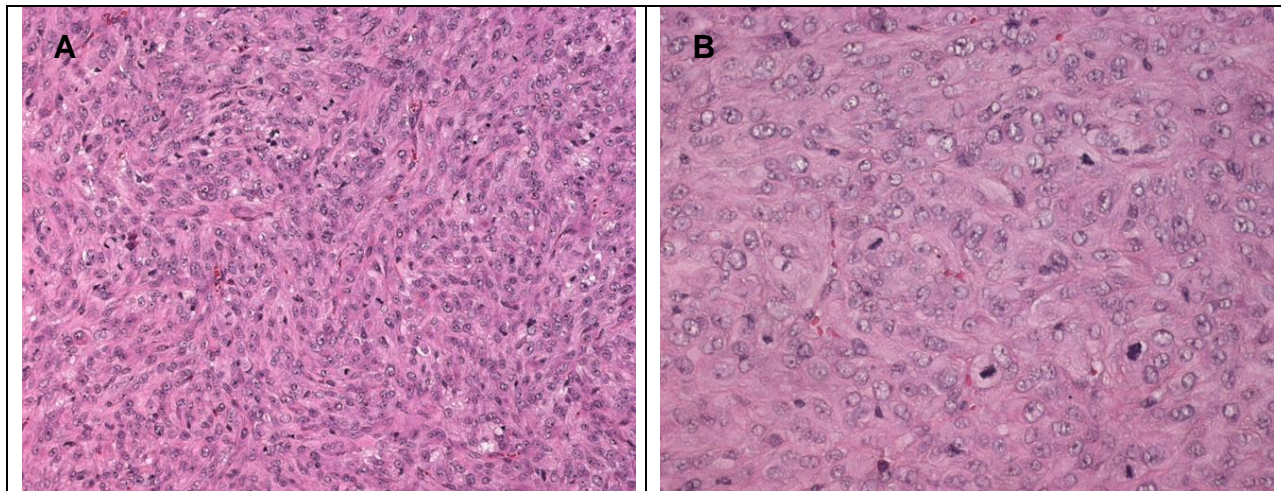


Fig 1. H&E stained LTL-502 tissue sections.

The tumour is an intermediate-grade spindle cell sarcoma and exhibits moderate to severe nuclear atypia and a high mitotic rate (>25 mitoses/10hpf) (A, 200x; B, 400x).

Genetic and epigenetic characteristics

Tumor line tissue (in tissue microarrays) for IHC and ISH is in place for screening potential targets upon request.

Applications

1. Pre-clinical evaluation of existing and potential anticancer drugs. Examination of drug efficacy on tumor growth, cell death (apoptosis, necrosis), tissue invasion, metastasis (in combination with metastatic tumor lines) and angiogenesis.
2. Discovery of potential therapeutic targets and/or biomarkers for drug sensitivity.
3. Study of mechanisms underlying tumor growth, progression and metastasis (in combination with metastatic tumor lines).

For more information, please contact us by email: LTL@bccrc.ca or phone: (604) 675 8013