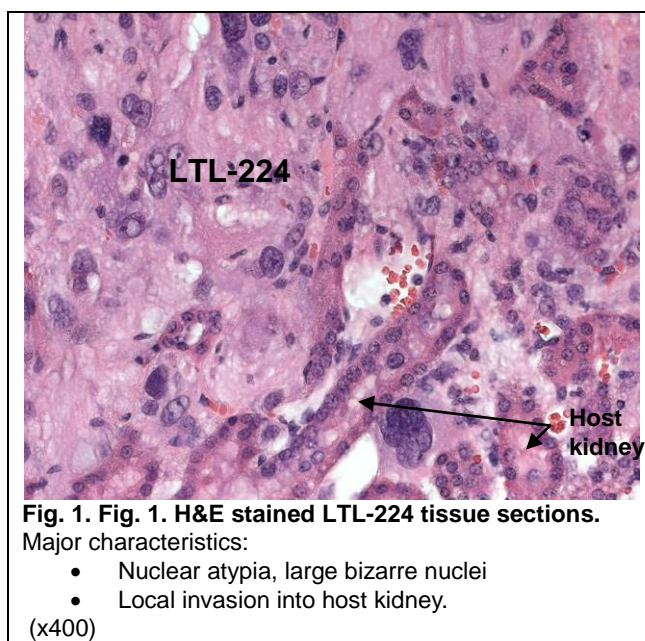


# LTL-224 datasheet

<b>Origin</b>	Primary human sarcoma	<b>Histopathology</b>	Leiomyosarcoma of uterus
<b>Year of establishment</b>	2006	<b>Doubling time</b>	9 days (sub-renal)
<b>Local invasion</b>	Yes	<b>Metastasis</b>	No
<b>Drug sensitivity</b>	Not determined		

The LTL-224 was developed from a patient's Leiomyosarcoma of uterus. In the host, the LTL-224 shows local invasion into adjacent renal parenchyma (Fig. 1). No metastasis is observed.



## Genetic and epigenetic characteristics

Tissue microarrays containing LTL-224 tissue are available for screening potential molecular targets.

## Applications

1. Pre-clinical evaluation of existing and potential anticancer drugs. Examination of drug efficacy on tumor growth, cell death (apoptosis, necrosis), tissue invasion, and

angiogenesis.

2. Discovery of potential therapeutic targets and/or biomarkers for drug sensitivity.
3. Study of mechanisms underlying tumor growth and progression.

**References:**

1. Lee et al., Gynecologic Oncology 2005; 96: 48-55
2. Press et al., Gynecologic Oncology 2008; 110: 256-264

**For more information, please contact us by email: [LTL@bccrc.ca](mailto:LTL@bccrc.ca) or phone: 1-604-675-8013**