

LTL-539 datasheet

Origin	Human prostate cancer	Histopathology	High grade adenocarcinoma
Year of establishment	2013	Doubling time	14.79±3.00 days
Local invasion	Not determined (in early generations)	Metastasis	Not determined (in early generations)
Hormone sensitivity	Androgen-dependent		

The LTL-539 tumor tissue line (Fig. 1) was developed from a patient's metastatic prostate cancer (high grade prostate adenocarcinoma, Gleason 4+5). Viable tissues of the LTL-539 in early generations have been preserved by cryopreservation (DMSO), and can be readily resurrect for grafting.

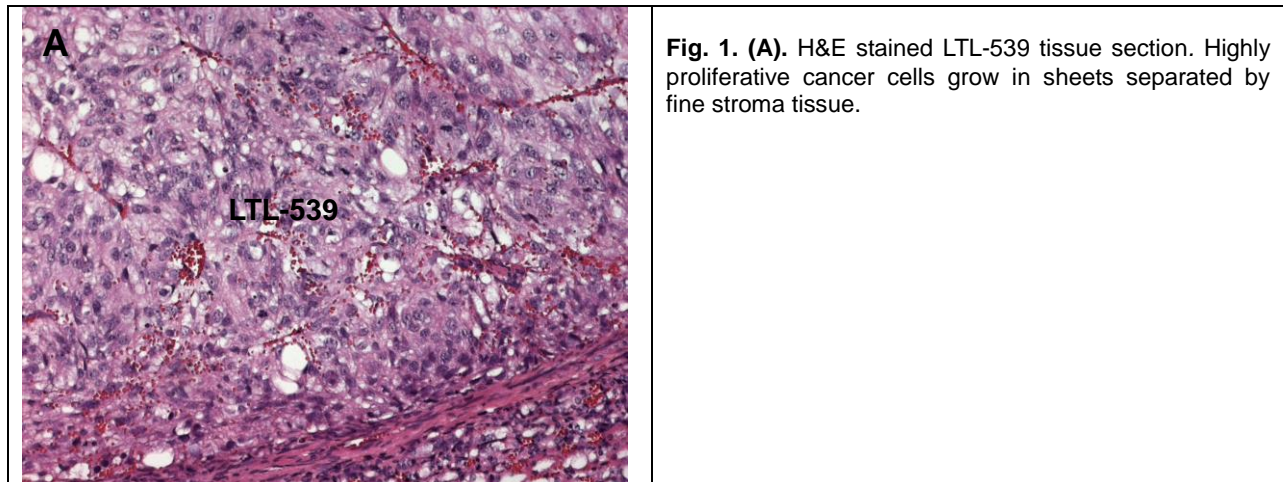


Fig. 1. (A). H&E stained LTL-539 tissue section. Highly proliferative cancer cells grow in sheets separated by fine stroma tissue.

Applications

1. Pre-clinical evaluation of established and potential anticancer drugs. Examination of drug efficacy on tumor growth, cell death (apoptosis, necrosis), tissue invasion, metastasis (in combination of metastatic tumor lines) and angiogenesis.
2. Discovery of potential therapeutic targets and/or biomarkers for drug sensitivity.
3. Study of mechanisms underlying tumor growth, progression and metastasis.

For more information, please contact us by email: LTL@bccrc.ca or phone: (604) 675 8013