

LTL-005 datasheet

Origin	Human lymphoma	Histopathology	Diffuse large B-cell lymphoma (DLBCL)
Year of establishment	2005	Doubling time	4 days (sub-renal)
Local invasion	Rare	Metastasis	No
Drug sensitivity	CDDP 2.5 mg/kg + Gemcitabine 120mg/kg (T/C = 41.15%, partial responder) ; SAHA (vorinostat) 100mg/kg (T/C = 87%, non-responder)		

The LTL-005 was developed from a patient's diffuse large B-cell lymphoma. When grafted under the renal capsules of SCID mice, the LTL-005 rarely shows local invasion into adjacent host kidney parenchyma. No metastasis was observed in hosts.

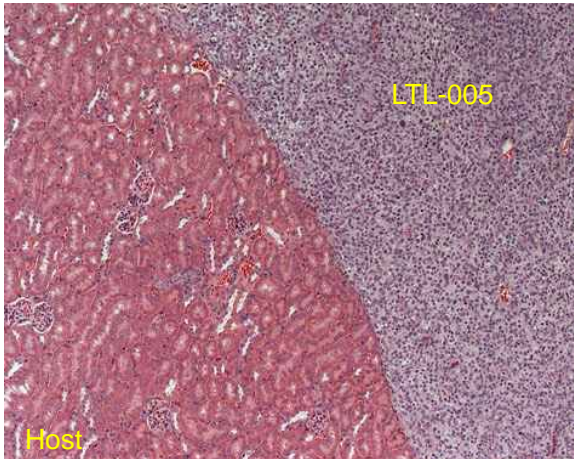


Fig. 1. H&E stained LTL-005 tissue sections.

The LTL-005 grows in a diffuse pattern with clear boundary between the xenograft and the host kidney.

For more information, please contact us by email: LTL@brrcr.ca or phone: (604) 675 8013