

LTL-013 datasheet

Origin	Human lymphoma	Histopathology	diffuse large B-cell lymphoma (DLBCL)
Year of establishment	2005	Doubling time	2.6 days (sub-renal)
Local invasion	Yes	Metastasis	No
Drug sensitivity	CDDP 2.5 mg/kg + Gemcitabine 120mg/kg (T/C = 1%, responder) ; SAHA (vorinostat) 100mg/kg (T/C = 32 %, partial responder)		

The LTL-013 was developed from a patient's diffuse large B-cell lymphoma. When grafted under the renal capsules of SCID mice, the LTL-013 shows local invasion into adjacent host kidney parenchyma. No metastasis was observed in hosts.

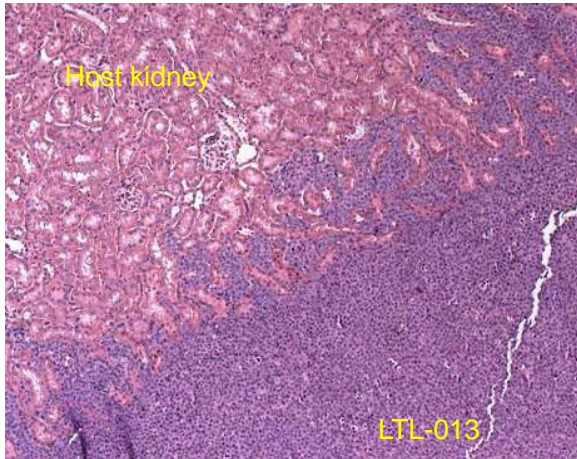


Fig. 1. H&E stained LTL-013 tissue sections.

The LTL-013 grows in a diffuse pattern with invasion into adjacent mouse kidney.

For more information, please contact us by email: LTL@brrcr.ca or phone: (604) 675 8013