

LTL-030 datasheet

Origin	Human lymphoma	Histopathology	diffuse large B-cell lymphoma (DLBCL)
Year of establishment	2006	Doubling time	10.8 days (sub-renal)
Local invasion	rare	Metastasis	No
Drug sensitivity	2.5 mg/kg + Gemcitabine 120mg/kg (T/C = 3.79%, responder); SAHA (vorinostat) 100mg/kg (T/C = 76 %, non-responder)		

The LTL-030 was developed from a patient's diffuse large B-cell lymphoma. When grafted under the renal capsules of SCID mice, the LTL-030 rarely invade adjacent host kidney parenchyma. No metastasis was observed in hosts.

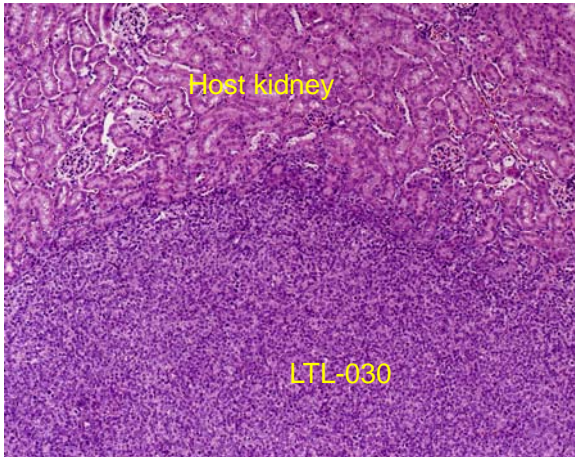


Fig. 1. H&E stained LTL-030 tissue sections.

When grafted under the renal capsule of a NOD/SCID mouse, the LTL-030 shows little invasion into host kidney.

For more information, please contact us by email: LTL@brrcr.ca or phone: (604) 675 8013