

LTL-034 datasheet

| | | | |
|------------------------------|---|-----------------------|---------------------------------------|
| Origin | Human lymphoma | Histopathology | diffuse large B-cell lymphoma (DLBCL) |
| Year of establishment | 2006 | Doubling time | 2.4 days (sub-renal) |
| Local invasion | Yes | Metastasis | Yes |
| Drug sensitivity | CDDP 2.5 mg/kg + Gemcitabine 120mg/kg (T/C = 51.39%, non-responder) ; SAHA (vorinostat) 100mg/kg (T/C = 158 %, non-responder) | | |

The LTL-034 was developed from a patient's diffuse large B-cell lymphoma. When grafted under the renal capsules of SCID mice, the LTL-034 shows local invasion into adjacent host kidney parenchyma. Distant metastases were observed in hosts.

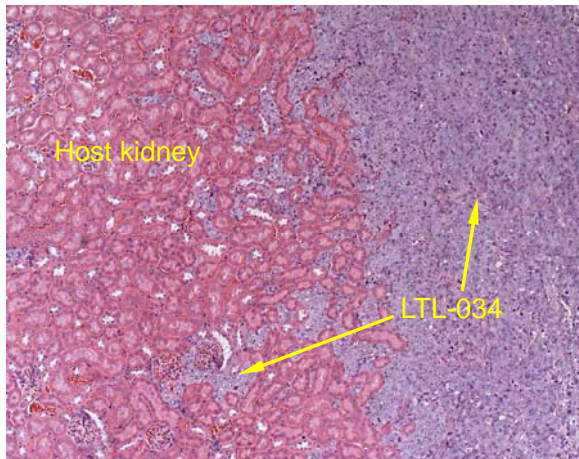


Fig. 1. H&E stained LTL-034 tissue sections.

When grafted under the renal capsule of a NOD/SCID mouse, the LTL-034 invades adjacent mouse kidney.

For more information, please contact us by email: LTL@brrcr.ca or phone: (604) 675 8013