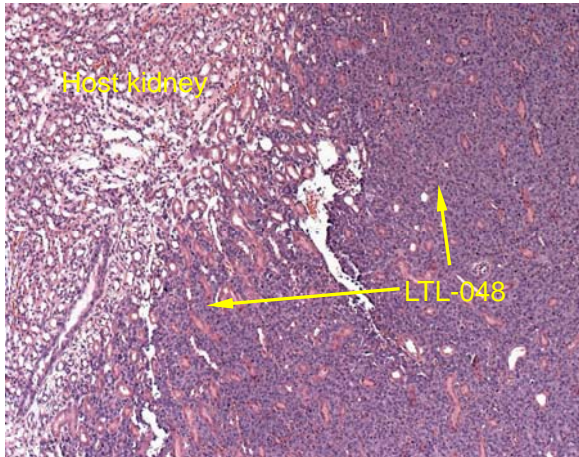


# LTL-048 datasheet

<b>Origin</b>	Human lymphoma	<b>Histopathology</b>	plasmablastic diffuse large B-cell lymphoma (DLBCL)
<b>Year of establishment</b>	2006	<b>Doubling time</b>	6.3 days (sub-renal)
<b>Local invasion</b>	Yes	<b>Metastasis</b>	No
<b>Drug sensitivity</b>	CDDP 2.5 mg/kg + Gemcitabine 120mg/kg (T/C = 0.97%, responder); SAHA (vorinostat) 100mg/kg (T/C = 41 %, partial responder)		

The LTL-048 was developed from a patient's plasmablastic diffuse large B-cell lymphoma. When grafted under the renal capsules of SCID mice, the LTL-048 shows local invasion into adjacent host kidney parenchyma. No metastasis was observed in the hosts.



**Fig. 1. H&E stained LTL-048 tissue sections.**

When grafted under the renal capsule of a NOD/SCID mouse, the LTL-048 invades into adjacent mouse kidney.

For more information, please contact us by email: [LTL@brrcr.ca](mailto:LTL@brrcr.ca) or phone: (604) 675 8013