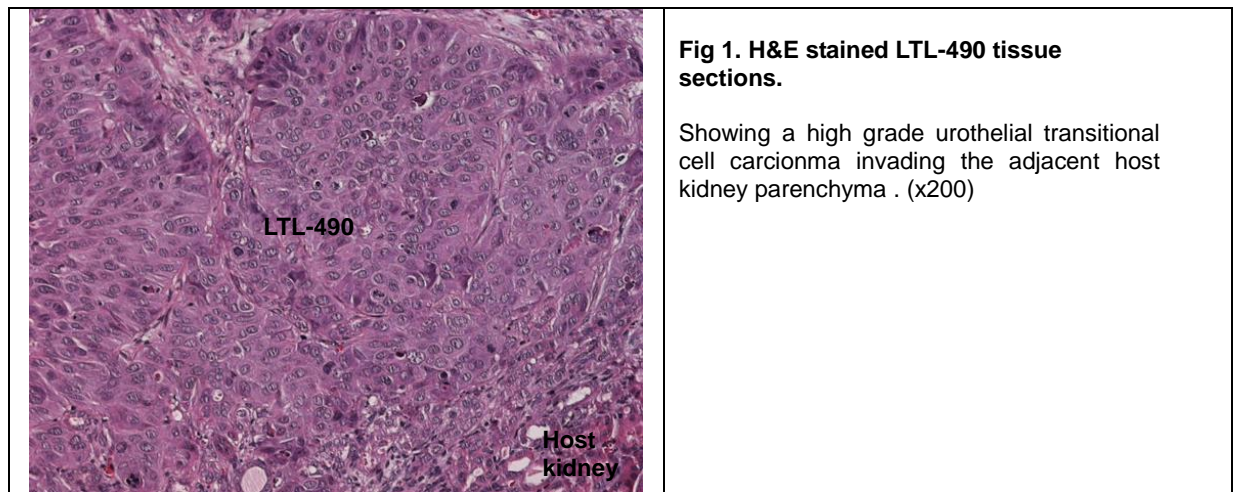


LTL-490 datasheet

Origin	Primary human urothelia carcinoma	Histopathology	Urothelial (transitional cell) carcinoma
Year of establishment	2013	Doubling time	5 days (sub-renal capsule grafting)
Local invasion	Yes, limited	Metastasis	Not determined

The LTL-490 (Figure 1) was developed from a patient's primary urothelial (transitional cell) carcinoma. When grafted under the renal capsules of SCID mice, the LTL-490 shows local invasion into adjacent host kidney parenchyma. Viable tissues in early generations have been preserved following by cryopreservation (DMSO), and can be readily resurrected for grafting.



Genetic and epigenetic characteristics

Tissue microarrays containing LTL-490 tissue are available for screening potential molecular targets.

Applications

1. Pre-clinical evaluation of existing and potential anticancer drugs. Examination of drug efficacy on tumor growth, cell death (apoptosis, necrosis), metastasis and angiogenesis.
2. Discovery of potential therapeutic and/or biomarkers for drug sensitivity targets.
3. Study of mechanisms underlying tumor growth and progression.

For more information, please contact us by email: LTL@bccrc.ca or phone: (604) 675 8013