

LTL-525 datasheet

Origin	Primary human kidney cancer	Histopathology	Clear cell renal cell carcinoma
Year of establishment	2013	Doubling time	5 days (sub-renal capsule grafting)
Local invasion	Yes, limited	Metastasis	No

The LTL-525 (Figure 1) was developed from a patient's primary kidney cancer (clear cell renal cell carcinoma). When grafted under the renal capsules of SCID mice, the LTL-525 shows limited local invasion into adjacent host kidney parenchyma. No distant metastasis was observed in hosts. Viable tissues in early generations have been preserved following by cryopreservation (DMSO), and can be readily resurrected for grafting.

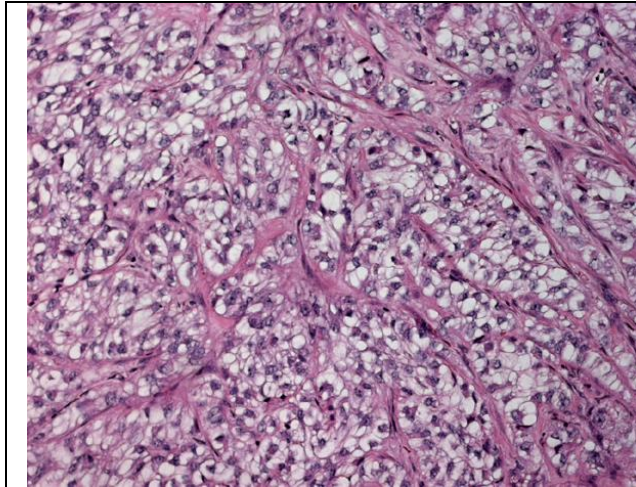


Fig 1. H&E stained LTL-525 tissue sections showing typical histological features of a clear cell renal cell carcinoma. Nests of epithelial cells with clear cytoplasm and distinct cell membranes are separated by a delicate stroma network. (x200)

Genetic and epigenetic characteristics

Tissue microarrays containing LTL-525 tissue are available for screening potential molecular targets.

Applications

1. Pre-clinical evaluation of existing and potential anticancer drugs. Examination of drug efficacy on tumor growth, cell death (apoptosis, necrosis), metastasis (in combination with metastatic tumor lines) and angiogenesis.
2. Discovery of potential therapeutic and/or biomarkers for drug sensitivity targets.
3. Study of mechanisms underlying tumor growth and progression.

For more information, please contact us by email: LTL@bccrc.ca or phone: (604) 675 8013